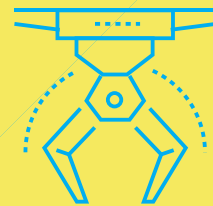




Advanced Manufacturing

Far North
Subregional Sector Profile



2023



FIVE-YEAR OUTLOOK

8%
sector job growth
over next five years

1,600+
annual job openings
over next five years

5%
of Far North's
jobs

This project is supported by Strong Workforce Program (SWP) funding.



Introduction

This sector profile highlights in-demand, middle-skill jobs that pay above a living wage.

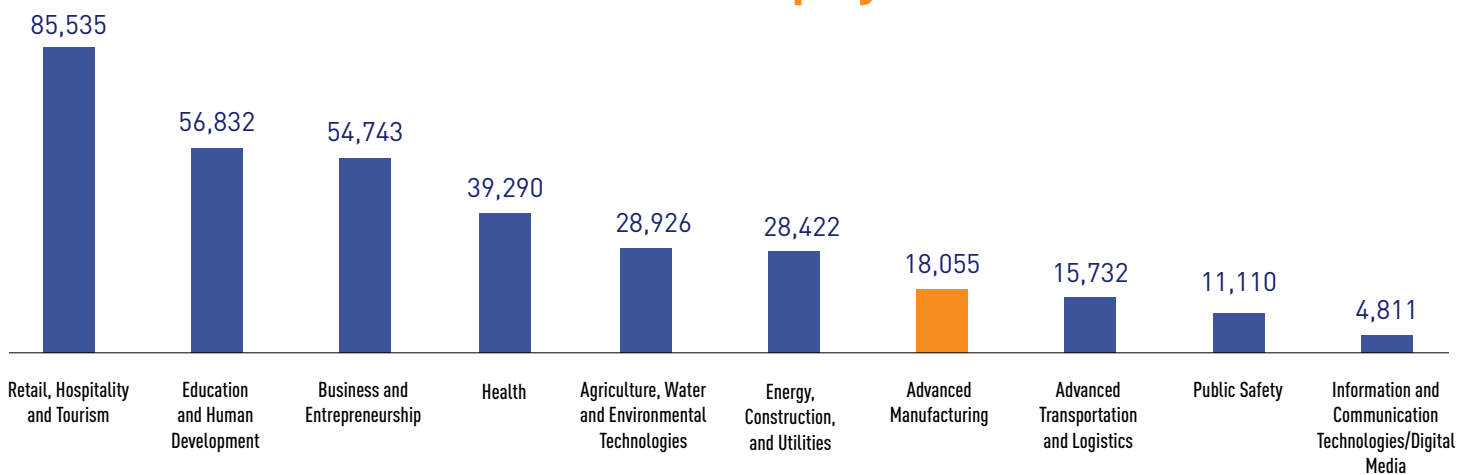
Middle-skill jobs, those which require education or training beyond a high school diploma but less than a bachelor's degree, are a critical component of the overall workforce and support the economic vitality of the region and the state.

This sector profile summarizes key data about current and projected workforce demand, hourly wages, job postings, and community college programs to support the goals of California's Strong Workforce Program (SWP).

SWP is an initiative designed to expand career education (CE) programs offered by the California Community Colleges to supply a skilled workforce to California's employers. The North Far North Regional Consortium (NFNRC) is charged with coordinating the planning and implementation of CE programs among community colleges within the 22-county North/Far North region, which includes the North (Greater Sacramento) and Far North subregions.

The Far North subregion encompasses 15 counties (Butte, Colusa, Del Norte, Glenn, Humboldt, Lake, Lassen, Mendocino, Modoc, Plumas, Shasta, Sierra, Siskiyou, Tehama, and Trinity) and seven community colleges (Butte, College of the Redwoods, College of the Siskiyou, Feather River, Lassen, Mendocino, and Shasta).

Far North 2021 Sector Employment



SECTOR Highlights



18,055
Jobs in 2021

19,506
Projected Jobs in 2026

8%
Projected Job Growth,
2021-2026

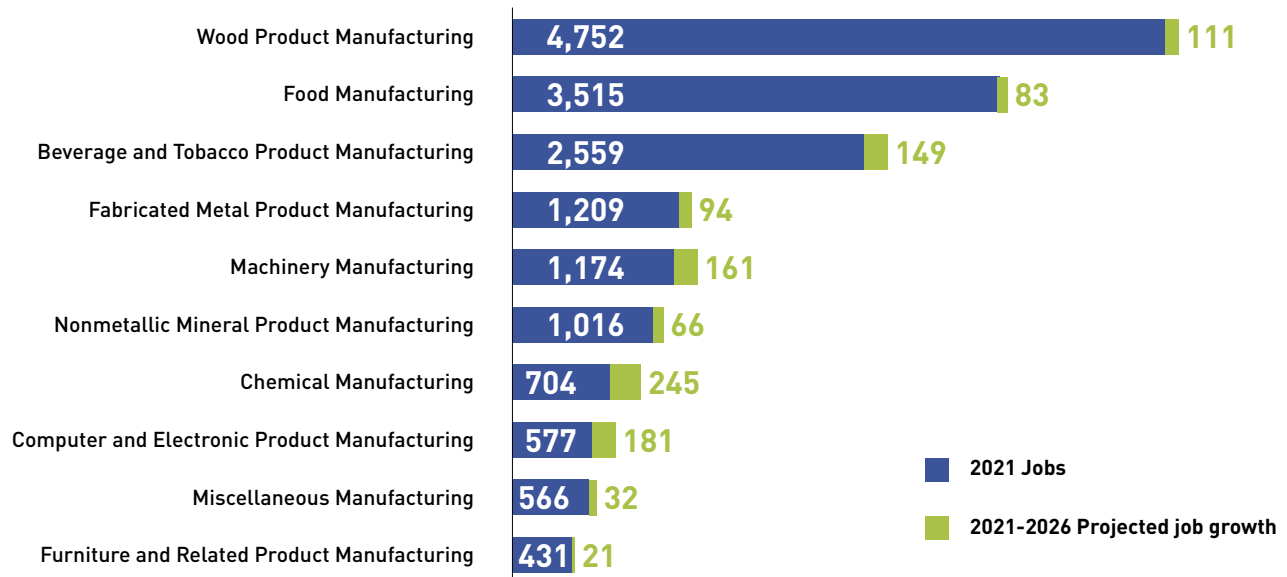
+1,451
New Jobs by 2026

843
Businesses

5.2%
% of Far North
Employment, 2021

Note: The Advanced Manufacturing sector includes 336 distinct 6-digit NAICS codes. Contact the NFN COE for a complete listing of NAICS codes by sector.

Employment by Industry Subsector

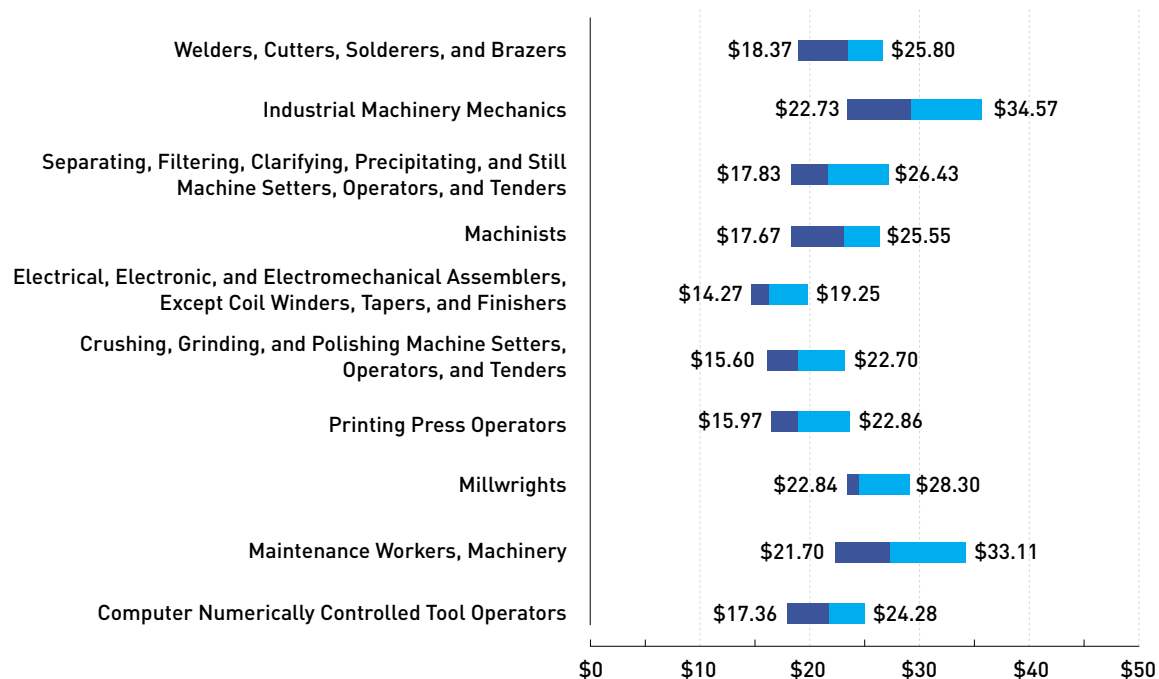


Priority Middle-Skill Occupations

Occupation	2021 Jobs	2021-2026 Projected % Change	2021-2026 Average Annual Openings	Typical Entry-Level Education
Welders, Cutters, Solderers, and Brazers	704	8%	89	High school diploma or equivalent
Industrial Machinery Mechanics	532	14%	63	High school diploma or equivalent
Separating, Filtering, Clarifying, Precipitating, and Still Machine Setters, Operators, and Tenders	381	5%	44	High school diploma or equivalent
Machinists	288	13%	39	High school diploma or equivalent
Electrical, Electronic, and Electromechanical Assemblers	169	30%	30	High school diploma or equivalent
Crushing, Grinding, and Polishing Machine Setters, Operators, and Tenders	167	9%	22	High school diploma or equivalent
Printing Press Operators	151	7%	20	High school diploma or equivalent
Millwrights	190	6%	20	High school diploma or equivalent
Maintenance Workers, Machinery	159	6%	16	High school diploma or equivalent
Computer Numerically Controlled Tool Operators	111	11%	15	High school diploma or equivalent

Note: Jobs for the above occupations may not solely exist in this sector and may be found in other sectors that require related services. Projected change includes new job growth and replacements.

Middle-Skill Hourly Wage Ranges



These occupations pay a starting wage at or above the subregion's living wage.

Note: The hourly wage ranges include the 25th percentile (entry-level), median, and 75th percentile (experienced) hourly earnings for workers employed in these occupations across the Far North subregion where the minimum wage in 2021 was \$15.

Priority Middle-Skill Job Postings



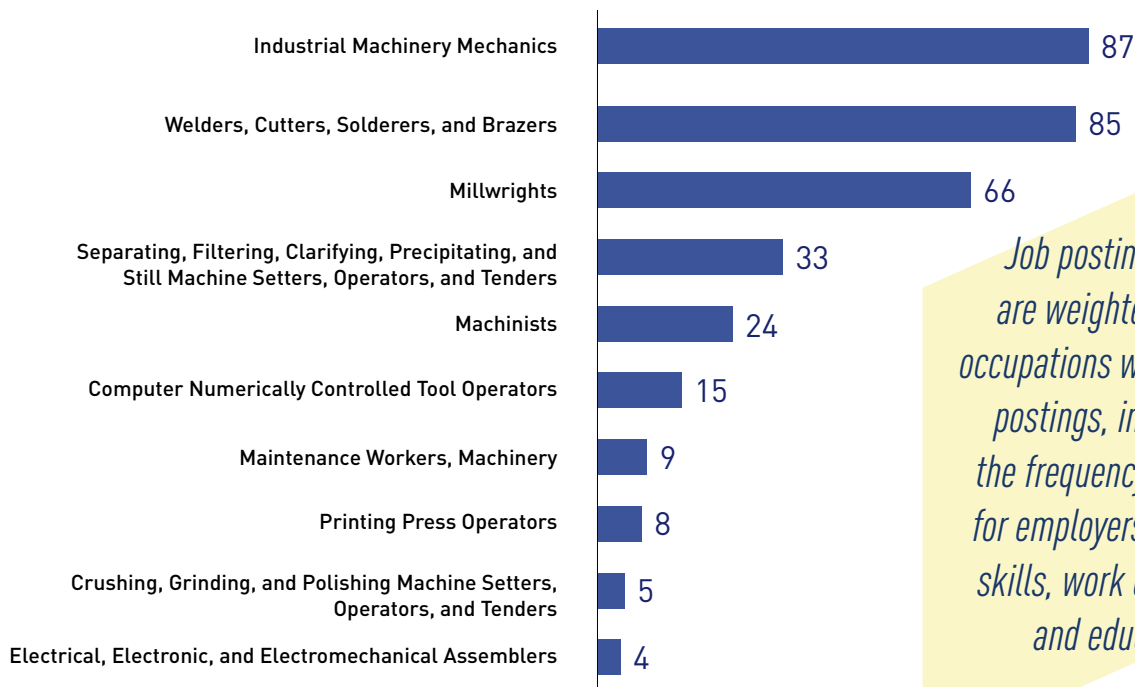
Posting intensity is the ratio of duplicated to unique job postings. A higher-than-average posting intensity can mean employers are putting more effort into hiring.

336
Online Job Postings

2:1
Posting Intensity
(Regional Average 3:1)

Note: Job postings count the number of online job postings advertised in the 15-county Far North subregion between January 1, 2022 - March 31, 2023. Postings are limited to in-state employers and exclude staffing companies. Job posting results represent the top 10 priority middle-skill occupations.

Job Postings by Occupation



Job posting results are weighted toward occupations with the most postings, influencing the frequency of results for employers, job titles, skills, work experience, and education.



Top Employers & Job Titles

Employers with the Most Postings

Mendocino Redwood Company
 Trimble
 Collins Companies
 Vintage Wine Estates
 Feather Falls Casino

Job Titles with the Most Postings

Millwrights
 Mechanics
 Welders and Fabricators
 CNC Operators and Machinists
 Brewers

Most In-Demand Skills

Specialized Skills

- Welding
- Machinery
- Fabrication
- Mills
- Forklift Truck

Soft Skills

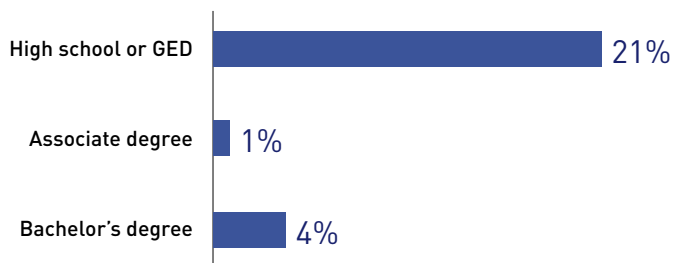
- Operations
- Troubleshooting (Problem-Solving)
- Lifting Ability
- Communications
- Mathematics

Software and Technical Skills

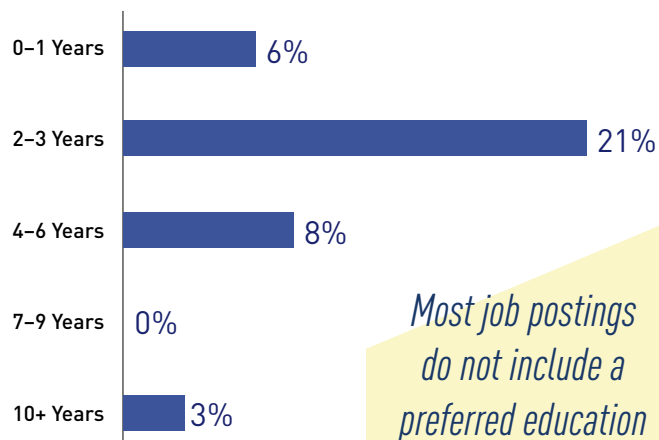
- Microsoft Office (Access, Excel, Outlook, PowerPoint, Word)
- Mastercam (CAD/CAM Software)
- JavaScript (Programming Language)
- SAP Applications
- Geographic Information Systems

Education & Experience in Postings

Employer-Preferred Education



Employer-Preferred Work Experience



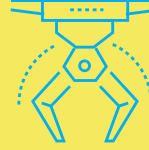
Most job postings do not include a preferred education or experience level.

Community College Programs



Butte College	College of the Redwoods	College of the Siskiyous	Feather River College	Lassen College	Mendocino College	Shasta College
Advanced Manufacturing	Aquaculture Technology	Welding Technology	None	Firearms Repair	None	Engineering Technology
Civil Engineering Technology	CADD/CAM Design & Manufacturing			General Gunsmithing		Industrial Technologies, General
Manufacturing Operations	Manufacturing Technology			Gunsmith Machinist and Metal Finisher		Maintenance Mechanic
Production Management	Manufacturing Maintenance Technician			Welding Technology		PLC Automation
Welding Technology	Marine Science Technology					Welding Technology
	Mechanical Drafting Technology					
	Welding Technology					





Prepared by

Ebony J. Benzing, Research Manager
North/Far North Center of Excellence for Labor
Market Research

Supported by:
Juan Madrigal, Labor Market Research Consultant

Editing by:
Lauren McSherry, L.M. McSherry Consulting

Graphic Design by:
Jim Schneider, Right Angle Design

Sources

- Lightcast 2022.4 - QCEW Employees, Non-QCEW Employees, and Self-Employed
- Centers of Excellence for Labor Market Research Occupation Crosswalk
- California Community Colleges Chancellor's Office LaunchBoard
- California Community Colleges Chancellor's Office DataMart
- Integrated Postsecondary Education Data System (IPEDS)
- California Community Colleges Curriculum Inventory (COCI)

Disclaimers:

All representations included in this report have been produced from primary research and/or secondary review of publicly and/or privately available data and/or research reports. Efforts have been made to qualify and validate the accuracy of the data and the reported findings; however, neither the Centers of Excellence, COE host District, nor California Community Colleges Chancellor's Office are responsible for applications or decisions made by recipient community colleges or their representatives based upon components or recommendations contained in this study.

© 2023 California Community Colleges Chancellor's Office, Centers of Excellence for Labor Market Research, Economic and Workforce Development Program

