



# Centers of Excellence for Labor Market Research

---

## Adult Pathways



**C·O·E**

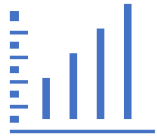
CENTERS OF EXCELLENCE  
Inform Connect Advance



**C·O·E**

**CENTERS OF EXCELLENCE  
FOR LABOR MARKET RESEARCH**

The COE provide **quality labor market data and information** to help colleges with:



Assessing labor  
market needs



Reviewing career  
education programs



Investing in new career  
education programs



Grant program planning  
and investment

**We aspire to be the leading source of workforce information  
and insight for California's community colleges.**

# The COE Network



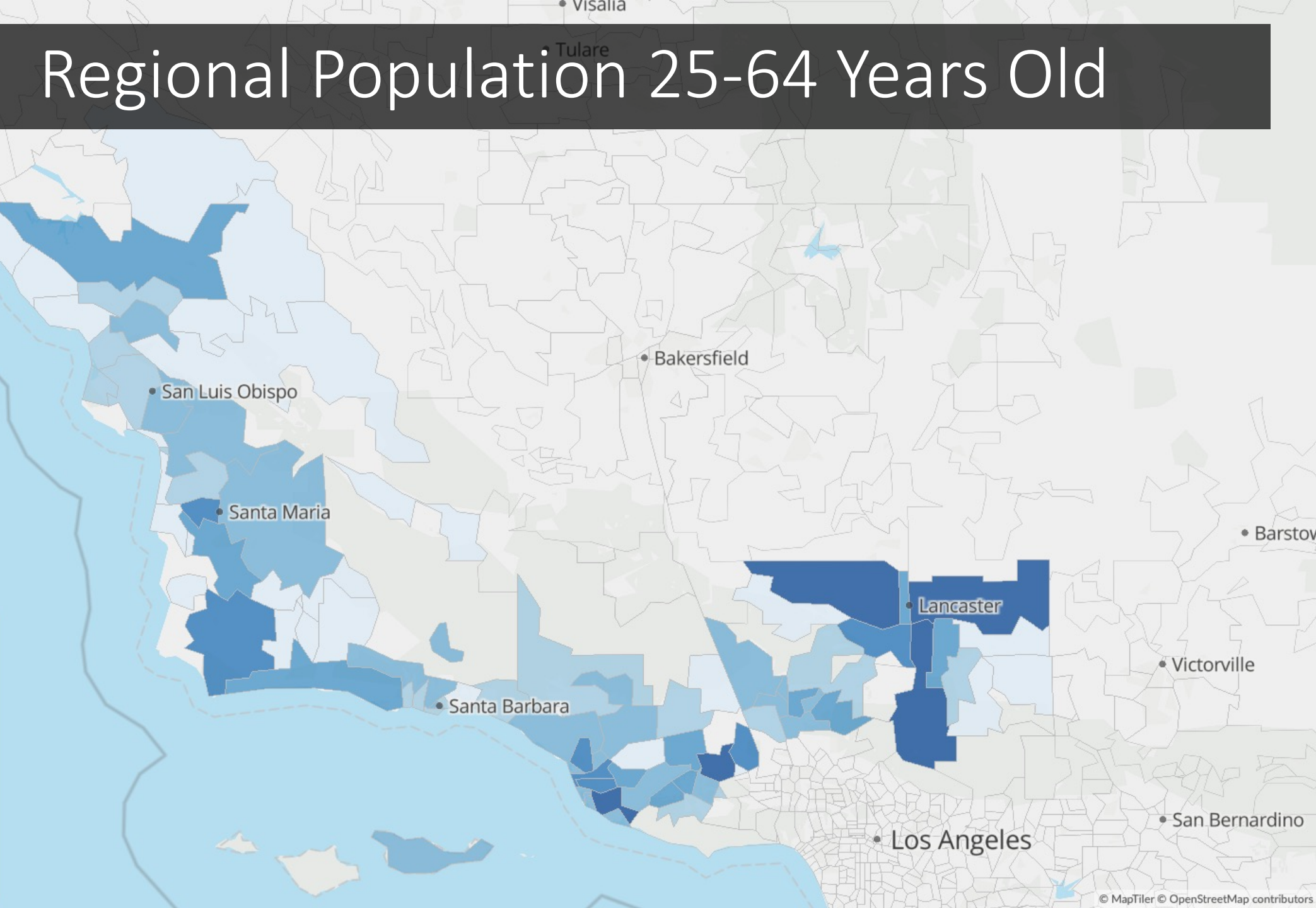
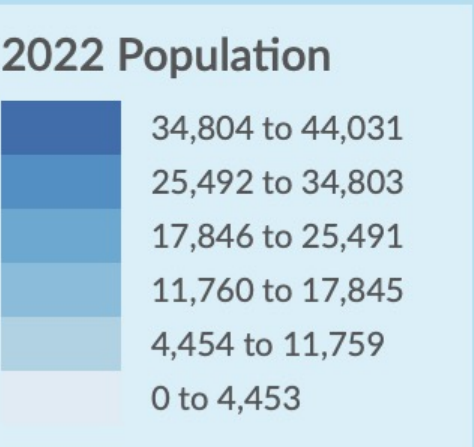


# Centers of Excellence for Labor Market Research

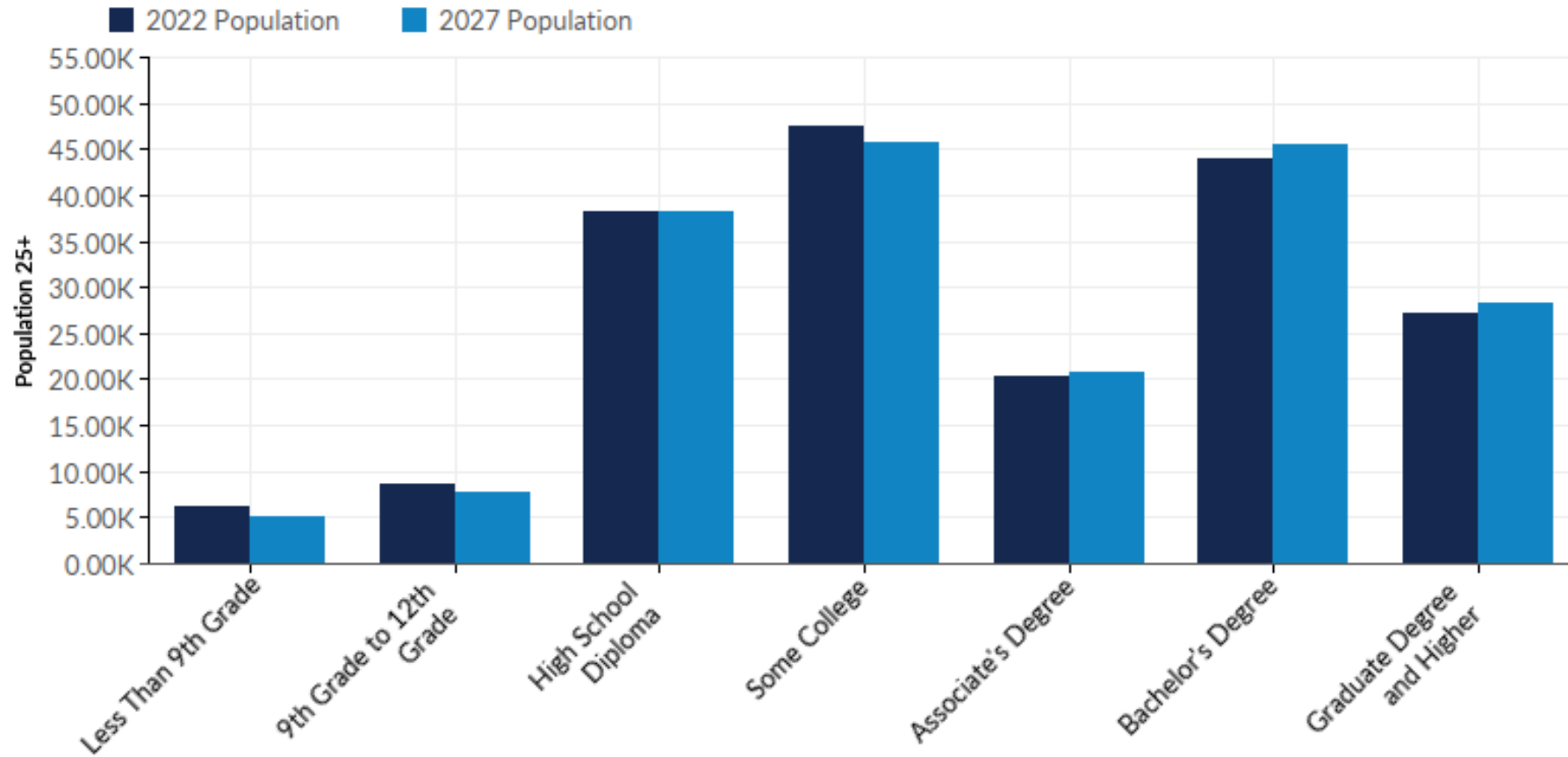
---

Population Demographics  
Potential Adult Education Population Segment

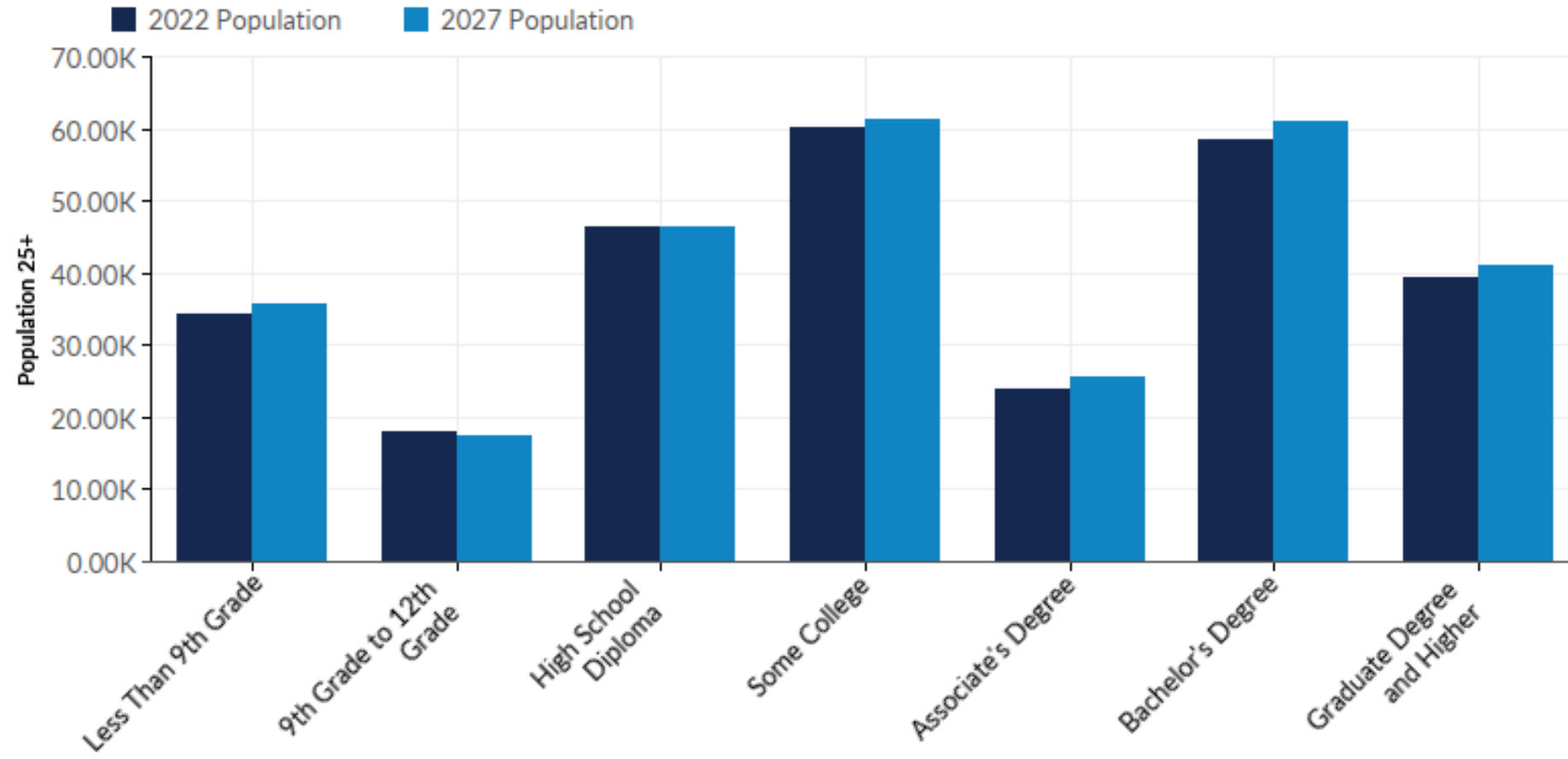
# Regional Population 25-64 Years Old



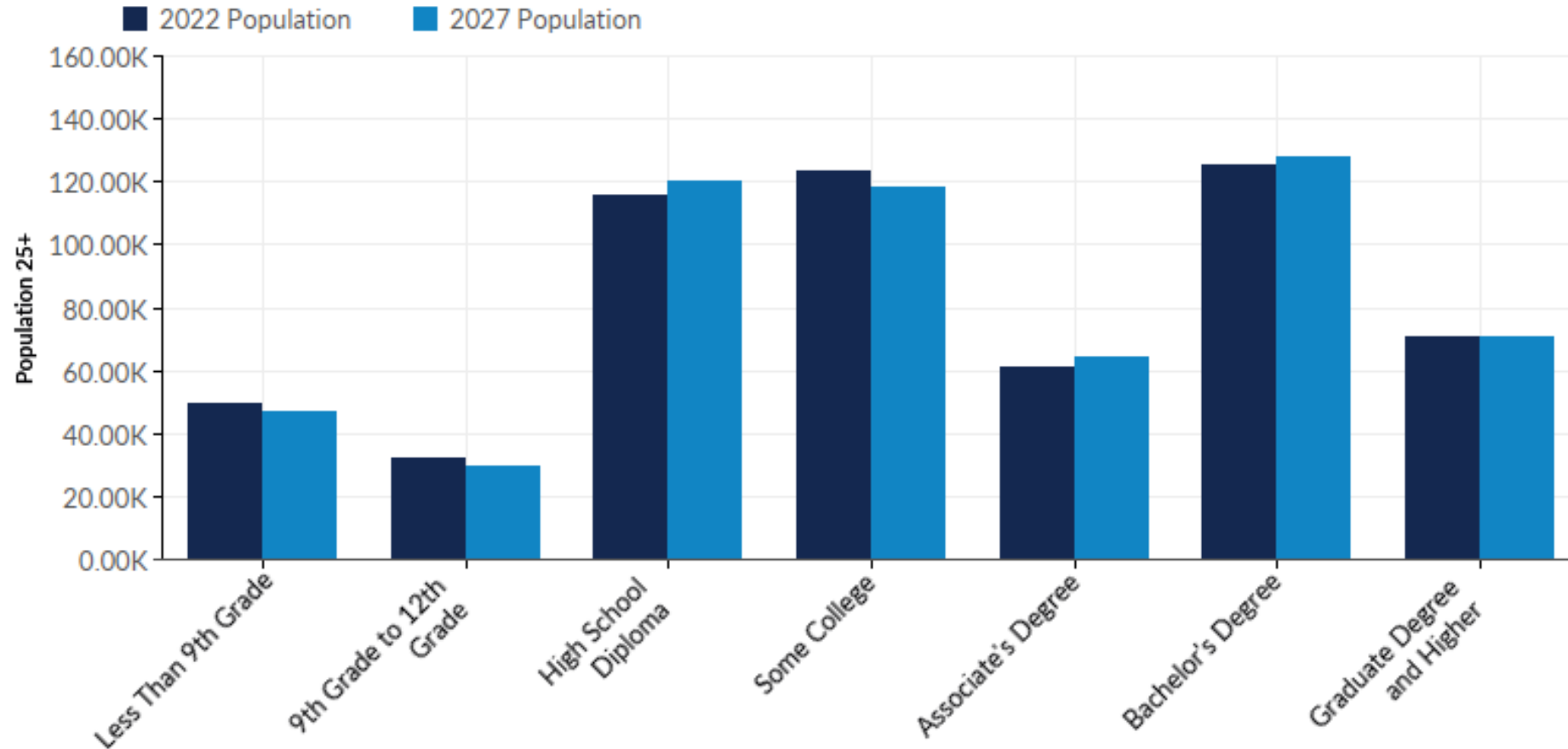
# Educational Attainment: San Luis Obispo County



# Educational Attainment: Santa Barbara County



# Educational Attainment: Ventura County





# People who speak English less than very well

[Source: Latest ACS 5-Year Estimates Data Profiles/Social Characteristics](#)



Los Angeles County 22.9%



San Luis Obispo County 5.6%



Santa Barbara County 16.4%



Ventura County 14.3%

# Older Adults (aged 55+) Still in the Labor Force

[Source: Latest ACS 5-Year Estimates Data Profiles/Social Characteristics](#)



Los Angeles County 42.4%



San Luis Obispo County 36.8%



Santa Barbara County 42.1%



Ventura County 43%

# Adults with Disabilities

[Source: Latest ACS 5-Year Estimates  
Data Profiles/Social Characteristics](#)



Los Angeles County 12%



San Luis Obispo County 14.2%



Santa Barbara County 12.3%



Ventura County 13%



# Centers of Excellence for Labor Market Research

---

Adult Education Pipeline

# Chancellor's Office – Adult Education Pipeline

---

**Student types** are reported based on participation in activities, or enrollment in adult education coursework at a community college noncredit program or an adult education school located in a K12 school district.



Reportable Individuals are at least 16 years of age at the time of entry and receive *any* noncredit support service or participate in one or more instructional contact hours at a K12 adult school or noncredit community college in an adult education program area.

<https://www.calpassplus.Org/Launchboard/Adult-Education-Pipeline.aspx>

**The AEP Score Card provides a snapshot view of the metrics reported annually to the legislature for Adult Education in California.**

TIME TREND & DEMOGRAPHICS

Time Trend ▾

✓ **Reportable Individuals: 33,564**

---

✓ **Students with 12+ Instructional Contact Hours (Participants): 24,820**

---

✓ **Completed an Educational Functioning Level Gain : 4,779**

---

✓ **Completed a Workforce Preparation Milestone: 3,384**

---

✓ **Transition to Postsecondary: 1,737**

---

✓ **Earned a Diploma, GED, or High School Equivalency: 592**

---

✓ **Completed a Postsecondary Credential: 3,662**

Source: Cal-PASS Plus LaunchBoard, Adult Education Pipeline,  
South Central Coast Region, 2019-20

**✓ Employment Two Quarters After Exit: 5,684**

---

**✓ Employment Four Quarters After Exit: 5,834**

---

**✓ Median Change in Earnings: 25%**

---

**✓ Median Annual Earnings : \$32,696**

Source: Cal-PASS Plus LaunchBoard, Adult Education Pipeline,  
South Central Coast Region, 2019-20



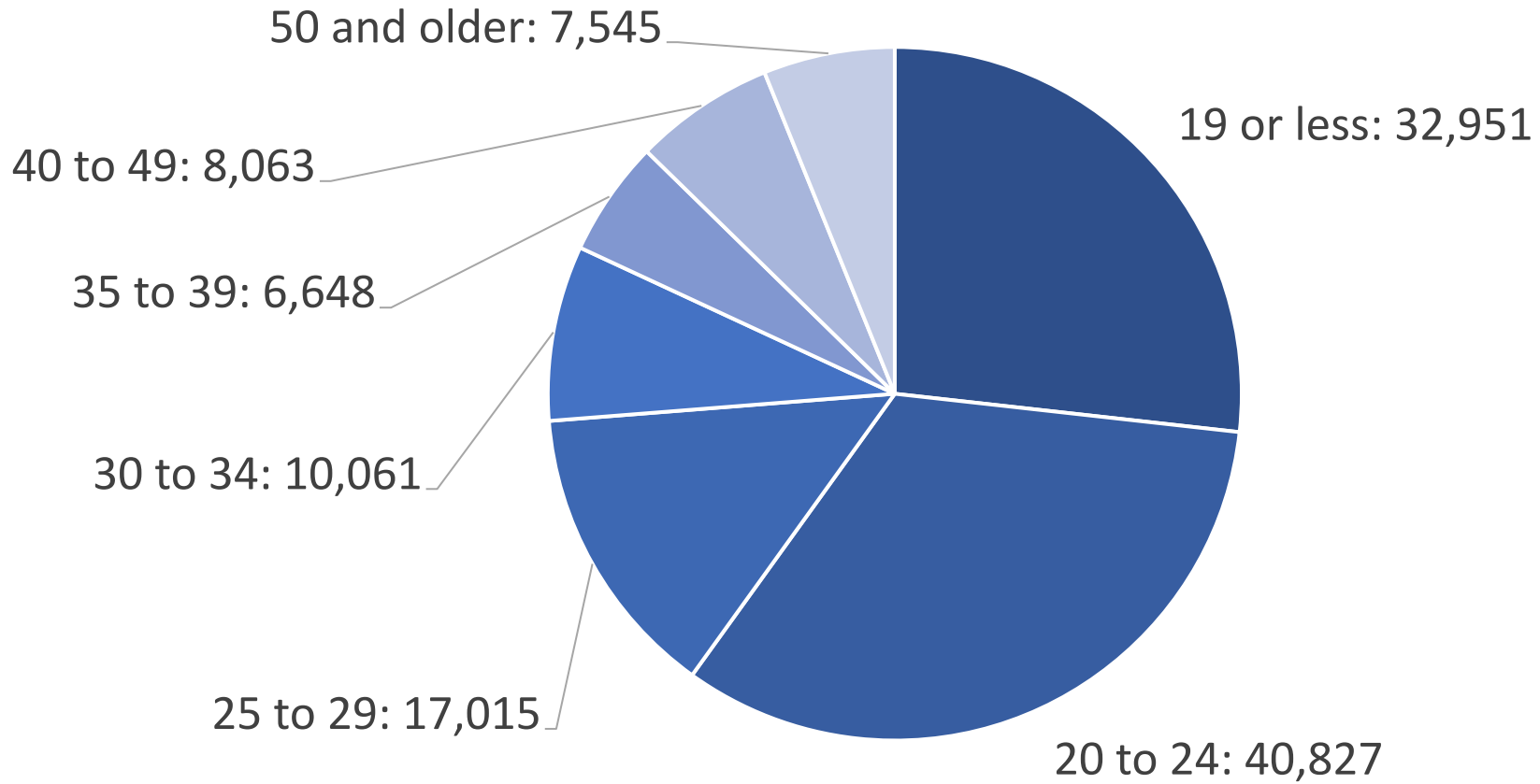
# Centers of Excellence for Labor Market Research

---

## Student Success Metrics



# Regional Students by Age, All



■ 19 or less ■ 20 to 24 ■ 25 to 29 ■ 30 to 34 ■ 35 to 39 ■ 40 to 49 ■ 50 and older

Source: Cal-PASS Plus LaunchBoard Community College Pipeline (2020-2021)

# Student Success Metrics

---



Skill-Builder students make up **11%** of the SCCR student population



Short-Term Career Students—those enrolled to build skills or advance their careers—comprise nearly 26,000 students.

# Student Success Metrics

---

In total, 18% of students transitioned from Adult Ed to postsecondary education or earned an award.

2021 saw a completion rate of 64% for enrollees in noncredit CTE TOP codes or workforce participation courses.

# Adult Education Pipeline

---

The top 5 regional institutions for noncredit CTE completers were:

---

Simi Institute for Careers and Education

---

Santa Barbara City College

---

Ventura Adult & Continuing Education

---

College of the Canyons

---

Antelope Valley College

---

# Adult Education Pipeline

---

The most common barrier to employment for Adult Ed students over time has been **Low Literacy**.

Specific to 2021, the most commonly reported barrier was **being a single parent**.



# Questions?

---

Dr. Adele Hermann Director, South Central Coast COE  
[ahermann@vccd.edu](mailto:ahermann@vccd.edu)

Thank you!



Browse our work online @ [coecc.net](http://coecc.net)