



April 15, 2022

In this issue:

- Labor Market Update: March 2022

Today's labor market release highlights the Inland Empire/Desert's (Riverside and San Bernardino counties) regional employment changes in March 2022.

In the first quarter of 2022, the region's unemployment rate dropped from 5.7% in January to 4.3% in March 2022, and our labor force increased by nearly 21,000 residents. More labor force means more workers to fill job vacancies. Employers added more than 24,000 jobs, mostly in leisure and hospitality, health care and education, and construction.

The next labor market update will be on Friday, May 20th (April 2022 data).

INLAND EMPIRE/DESERT LABOR MARKET UPDATE

March 2022 (released April 15, 2022)



Unemployment Rate
fell to
4.3%

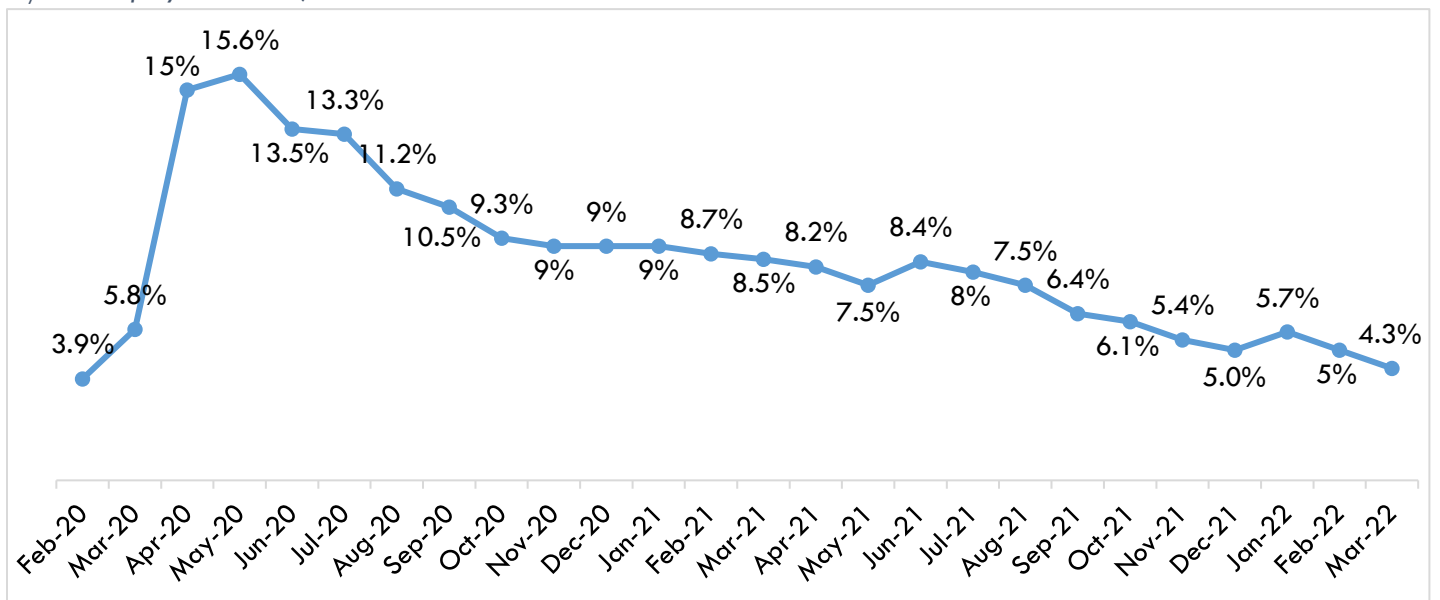


Nonfarm Employers
Added
8,700 jobs

Civilian Labor Force and the Unemployment Rate

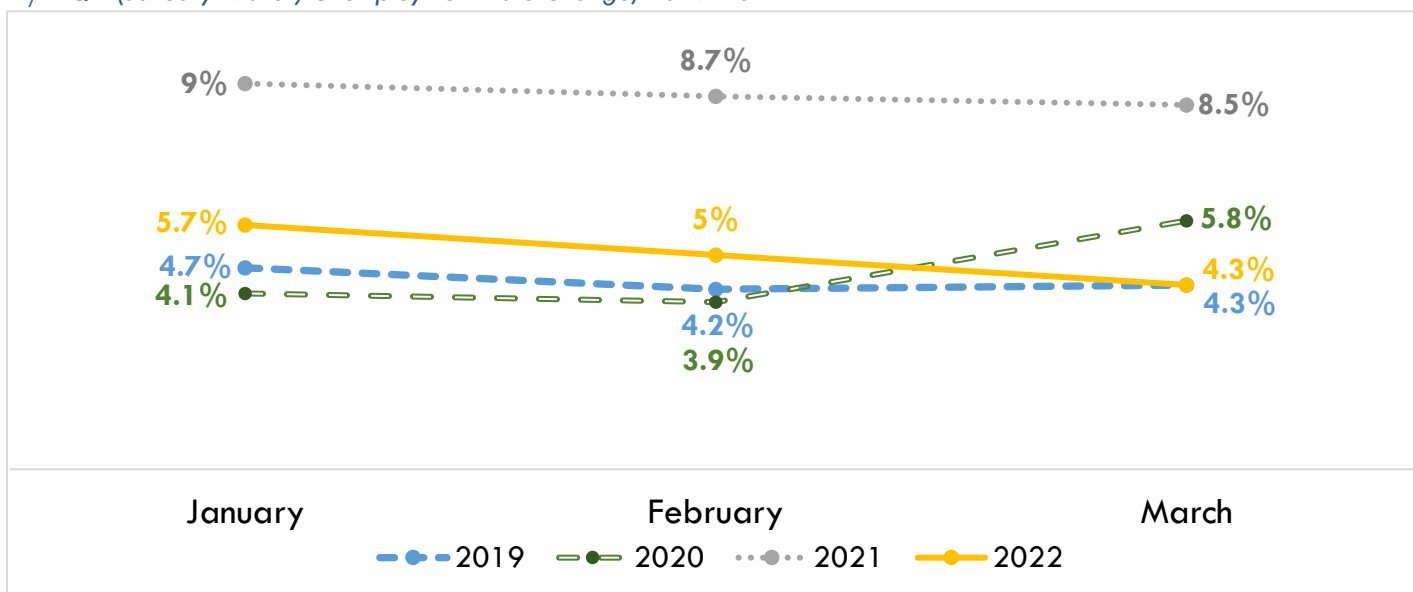
The civilian labor force is the total count of resident workers, 16 years and older, working or actively seeking work. The unemployment rate represents the number of unemployed expressed as a share of the total labor force.

IE/D Unemployment Rates, Feb 2020 to March 2022



- In March 2022, the region's unemployment rate decreased to 4.3%, matching the pre-pandemic unemployment rate in March 2019.
 - Over the month, the region's total labor force increased by 5,700 for a total of 2.186 million labor force participants. This indicates a regional increase in the number of residents working or seeking work over the month, which is good for employers seeking workers to fill job vacancies.
 - Employment (residents reporting work) grew by 21,000.
 - Unemployment (residents actively seeking work and able to work) decreased by 15,200.
- Year-over (March 2021 and March 2022), employment increased by 163,300 residents, and unemployment fell by 85,200 (down about 48%). The total labor force rose by 78,000 residents, up by 4%.
- Since February 2020, the regional labor force increased by 2.9%, an increase of 62,200 regional residents working or seeking work over the pandemic. Labor force growth is a positive indicator of the economic health of the region.

IE/D Q1 (January-March) Unemployment Rate Change, 2019-2022



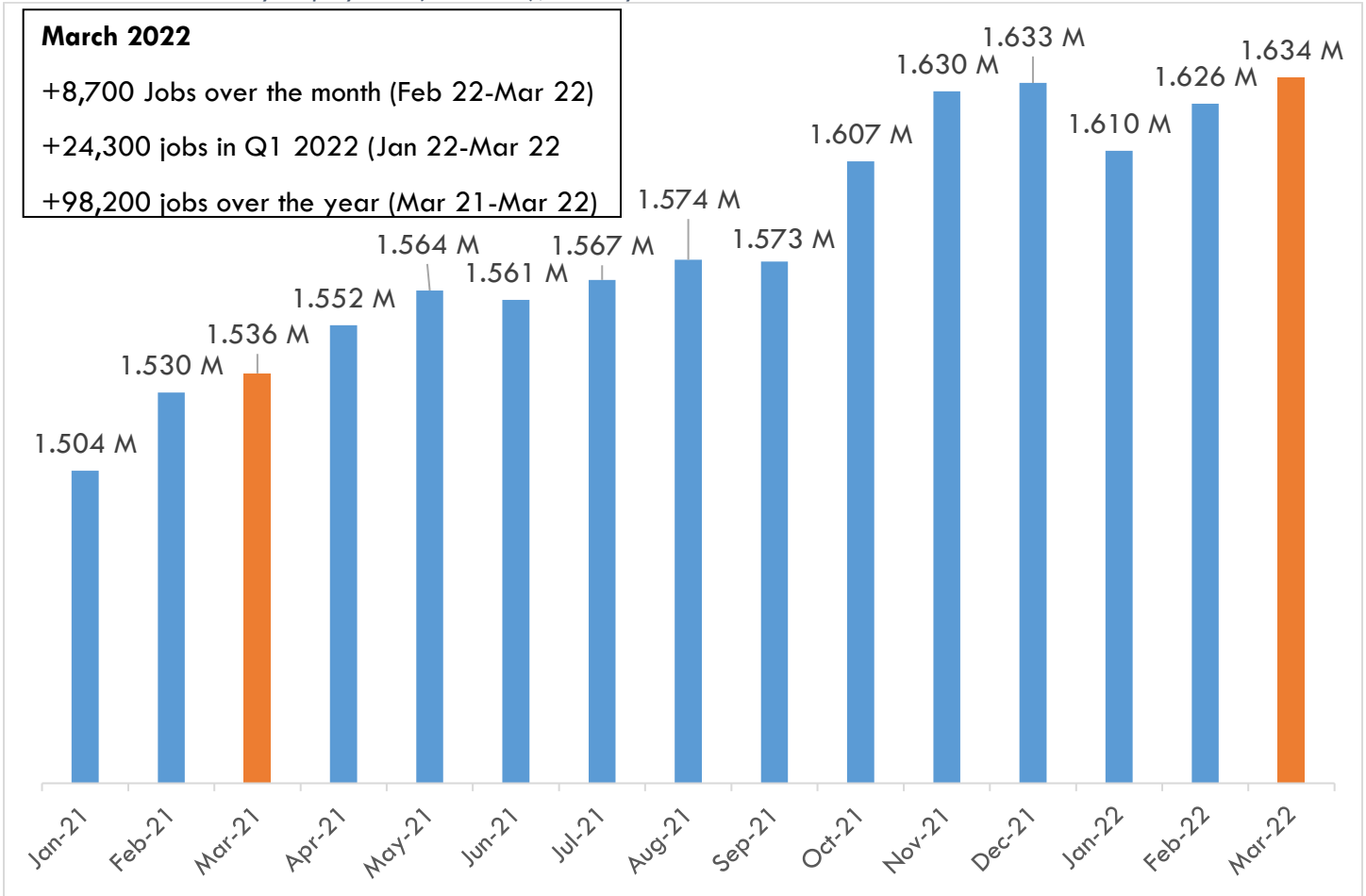
Comparable unemployment rates for California and Southern California Metro Areas (unadjusted), March 2019-2022

California & Southern California Regions	March 2019	March 2020	March 2021	March 2022 (Current)
California	4.5%	6.3%	8.6%	4.2%
Inland Empire/Desert Region (Riverside-San Bernardino-Ontario MSA)	4.3%	5.8%	8.5%	4.3%
Los Angeles County (Los Angeles-Long Beach-Glendale MD)	4.4%	6.7%	10.4%	4.9%
Orange County (Anaheim-Santa Ana-Irvine MD)	3%	4.1%	7%	3.1%
San Diego County (San Diego-Carlsbad MSA)	3.5%	4.7%	7.6%	3.4%
Imperial County (El Centro MSA)	18.1%	23.8%	17.2%	12.3%

Industry Employment and Jobs

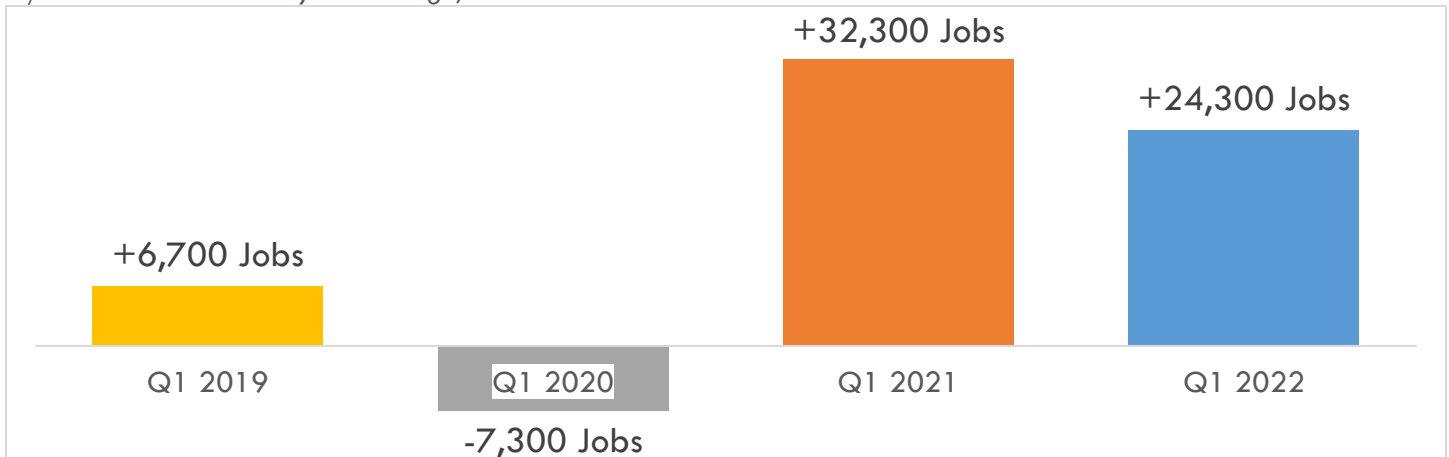
Industries are a group of establishments that produce similar products or provide similar services. A given industry may have employees in dozens of occupations to support their business activity.

IE/D Total Nonfarm Industry Employment (in millions), January 2021 to March 2022



- Regional nonfarm employers reported an increase of 8,700 jobs in March 2022, up 0.5% over the month.
 - In the first quarter of 2022, regional employers increased employment by 24,300 jobs, a 1.5% increase.
 - Over the year, the region added 98,200 nonfarm jobs, an increase of 6.4%.

IE/D Q1 Nonfarm Industry Job Change, 2019-2022



Notable nonfarm job change was recorded in the following sectors:

- The **construction** sector reported an increase of 2,500 jobs over the month, up by 2.4%.
 - This sector recorded a 4.8% increase in employment in Q1 2022, adding 5,000 jobs.
- **Government** employers added 1,600 jobs over the month. Nearly all the job growth in this sector was reported in the local government education subsector, adding 1,400 jobs. State government education added 200 jobs.
 - Government employment grew by 14,500 jobs from March 2021 to March 2022. About 91% of the year-over job growth in this sector was in the state (+1,600 jobs) and local government (+11,600 jobs) education subsectors.
- **Accommodations & food services** employers added 1,400 jobs over the month.
 - Limited-service eating places (pay before you eat and fast food) boosted the sector's employment by adding 1,100 jobs, and full-service restaurants (pay after you eat) reported a loss of 300 jobs.
- **Professional, scientific & technical services** employers increased by 1,200 jobs in March 2022, up by 2.6%.

IE/D Industry Sector Month-over, Year-over, and First Quarter 2022 job change

Industry Sector	March 2022 Jobs	Month-over Change (Feb-Mar 22)	Month-over % Change	Year-over Change (Mar21-Mar22)	Year-over Job % Change	Q1 2022 Change (Jan-Mar 22)	Q1 2022 % Change
Total Nonfarm	1,634,300	8,700	0.5%	98,200	6.4%	24,300	1.5%
Total Farm	14,600	500	3.5%	1,500	11.5%	-200	-1.4%
Government	254,200	1,600	0.6%	14,500	6%	1,400	0.6%
Health Care & Social Assistance	240,500	200	0.1%	5,500	2.3%	4,000	1.7%
Transportation & Warehousing	210,200	-3,300	-1.5%	21,200	11.2%	-2,300	-1.1%
Retail Trade	181,900	1,100	0.6%	8,500	4.9%	-1,200	-0.7%
Accommodation & Food Services	155,100	1,400	0.9%	22,300	16.8%	7,100	4.8%
Administrative & Support & Waste Services	115,200	900	0.8%	4,400	4%	1,500	1.3%
Construction	108,600	2,500	2.4%	1,000	0.9%	5,000	4.8%
Manufacturing	97,400	600	0.6%	2,800	3%	2,400	2.5%
Wholesale Trade	67,800	200	0.3%	1,400	2.1%	-400	-0.6%
Professional, Scientific & Technical Services	47,300	1,200	2.6%	3,400	7.7%	1,900	4.2%
Other Services	45,600	1,200	2.7%	4,300	10.4%	1,900	4.3%
Finance & Insurance	24,500	100	0.4%	0	0%	400	1.7%
Real Estate & Rental & Leasing	22,100	700	3.3%	2,100	10.5%	1,100	5.2%
Arts, Entertainment & Recreation	20,100	300	1.5%	4,600	29.7%	700	3.6%
Educational Services	19,200	-100	-0.5%	1,500	8.5%	500	2.7%
Information	9,800	100	1%	1,000	11.4%	100	1%
Mgmt. of Companies & Enterprises	8,500	0	0%	-300	-3.4%	200	2.4%
Utilities	5,000	0	0%	0	0%	0	0%
Mining and Logging	1,300	0	0%	0	0%	0	0%

Have a good Friday! 🍷

Inland Empire/Desert Center of Excellence
Michael Goss
Paul Vaccher

Source: California Labor Market Information Division (2022). *March 2022 data release*. Retrieved from <https://www.labormarketinfo.edd.ca.gov/>